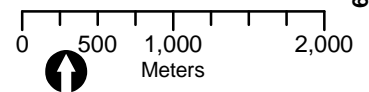


Figure 5-1 :
 Location and grouping of quadrats
 established by Bennett & Brearley 2005-2007

Legend

- CREEK
- GREYSAND
- LATERITE
- SANDY MS
- Tenement Boundaries
- Disturbance



Datum: GDA 1994 MGA Zone 50
 Drawn: BJ
 Date: 16/04/09



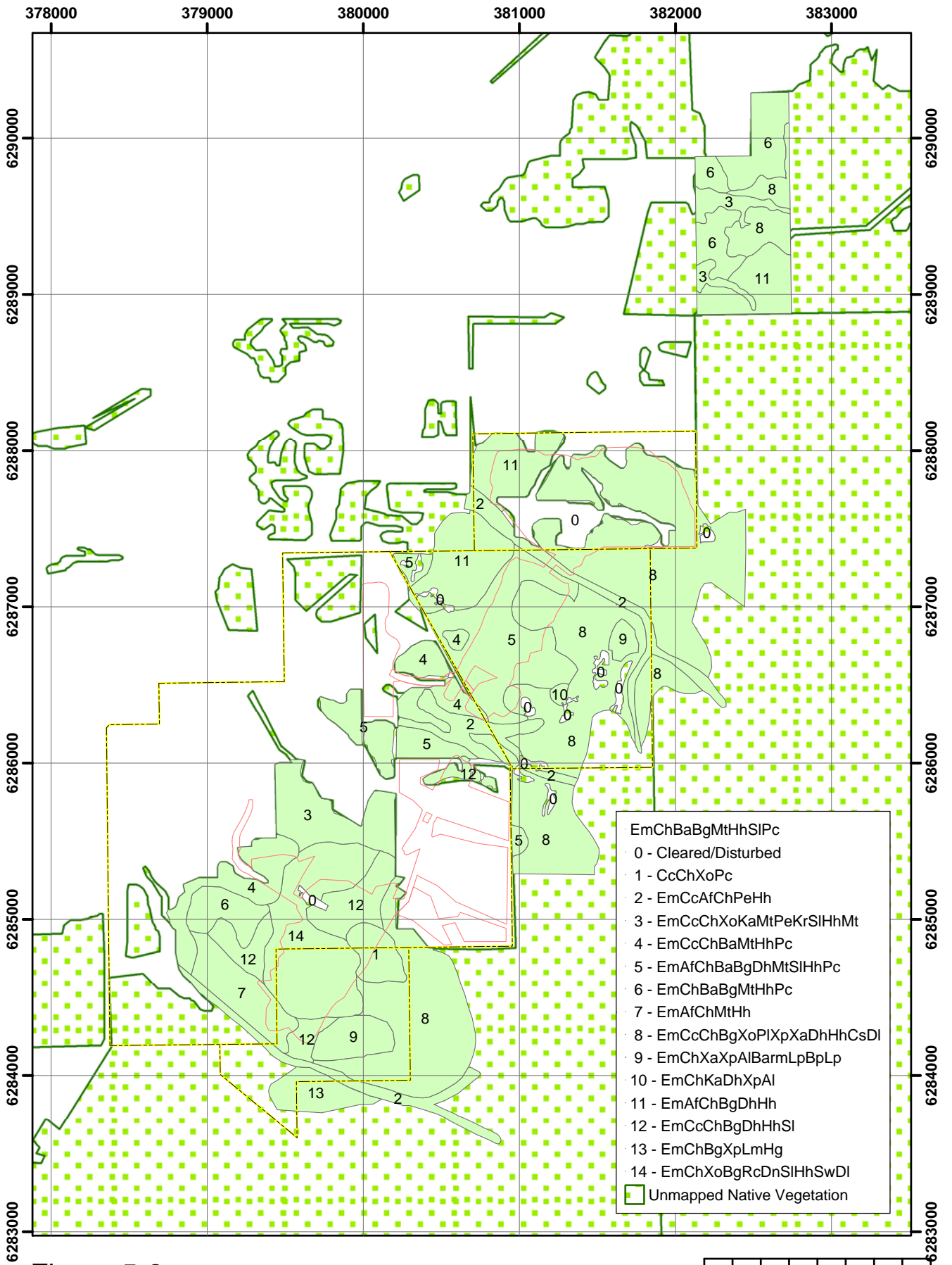
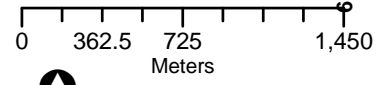


Figure 5-2:
Map of Site Vegetation Types, as developed
by Bemax (2008) and amended by Smith (2008b)

Legend

Disturbance Outline Tenement Boundary



Datum: GDA 1994 MGA Zone 50
Drawn: DH
Date: 17/7/09



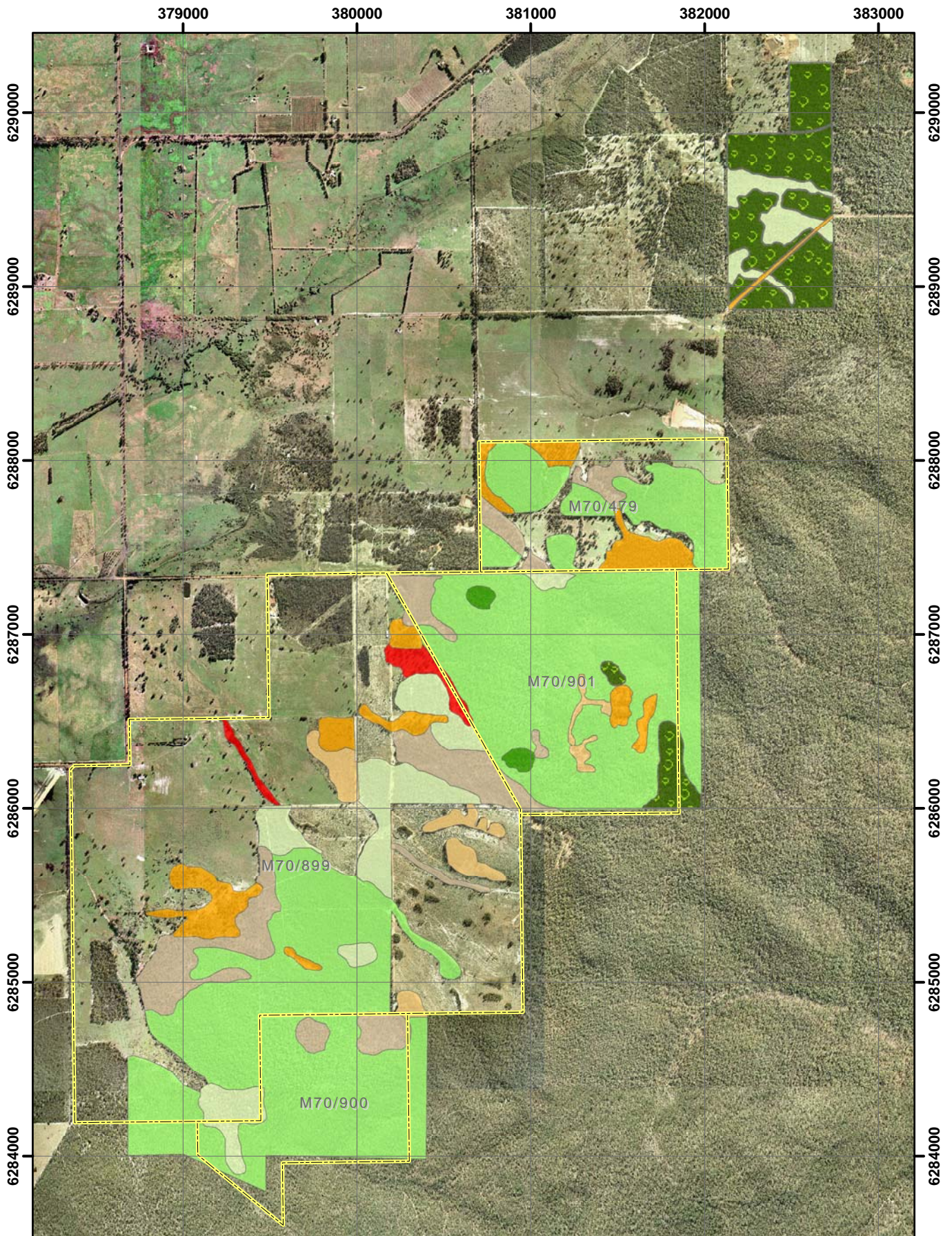


Figure 5-3:
Vegetation Condition of the Study Area
(Bennett, 2008 using the scale of Govt of WA 2000a)

Legend

- | | | |
|---|--|---|
| ■ Completely Degraded - Degraded | ■ Good - Very Good | □ Tenements |
| ■ Degraded | ■ Very Good | |
| ■ Degraded - Good | ■ Very Good - Excellent | |
| ■ Good | ■ Excellent | |

0 250 500 1,000
Meters



Datum: GDA 1994 MGA Zone 50
Drawn: DH
Date: 17/7/09



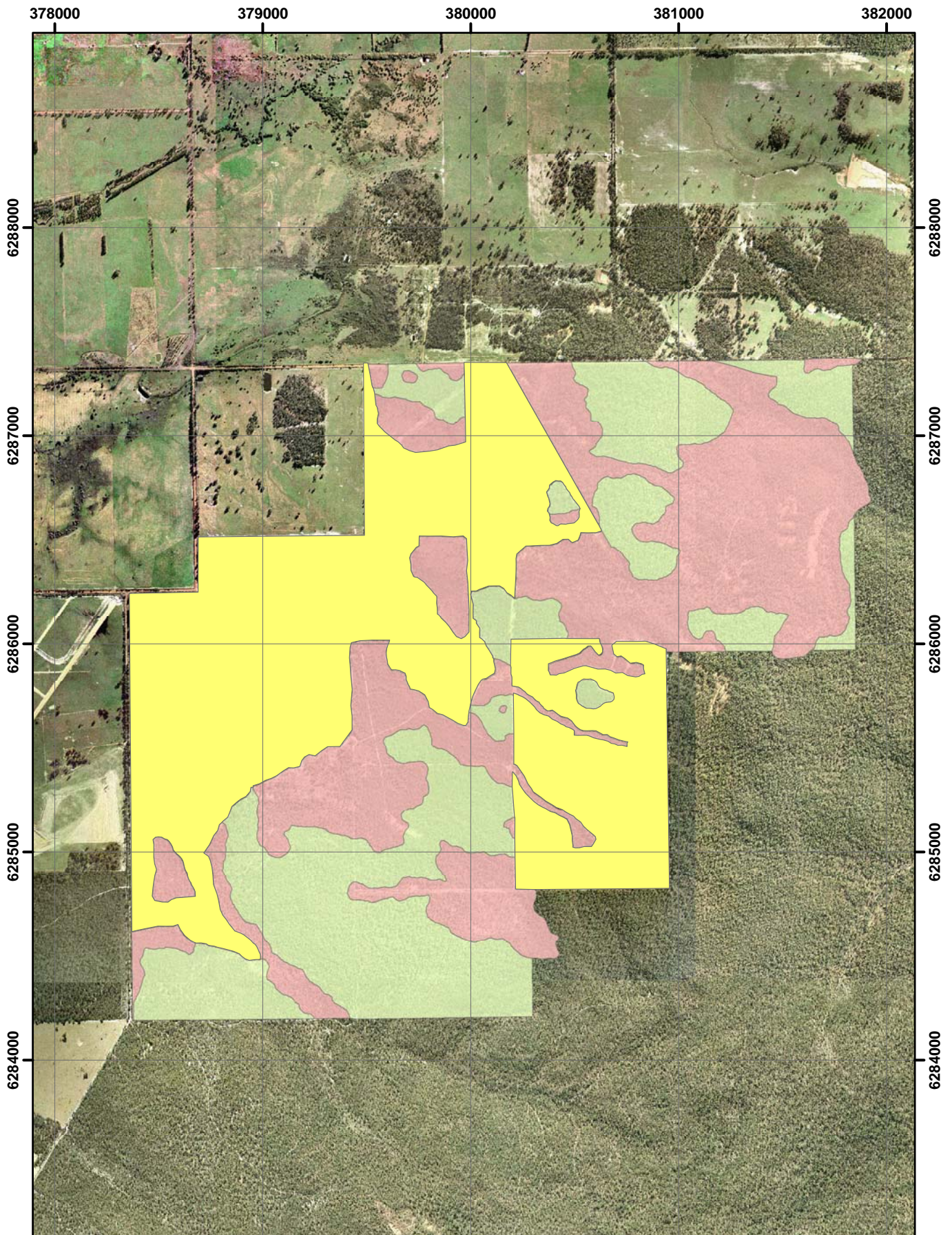
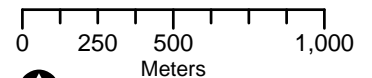


Figure 5-4
 Phytophthora cinnamomi occurrence (Glevan, 2008)

Legend

- Dieback Infested
- Dieback Free
- Unmappable



Datum: GDA 1994 MGA Zone 50
 Drawn: DH
 Date: 21/8/08



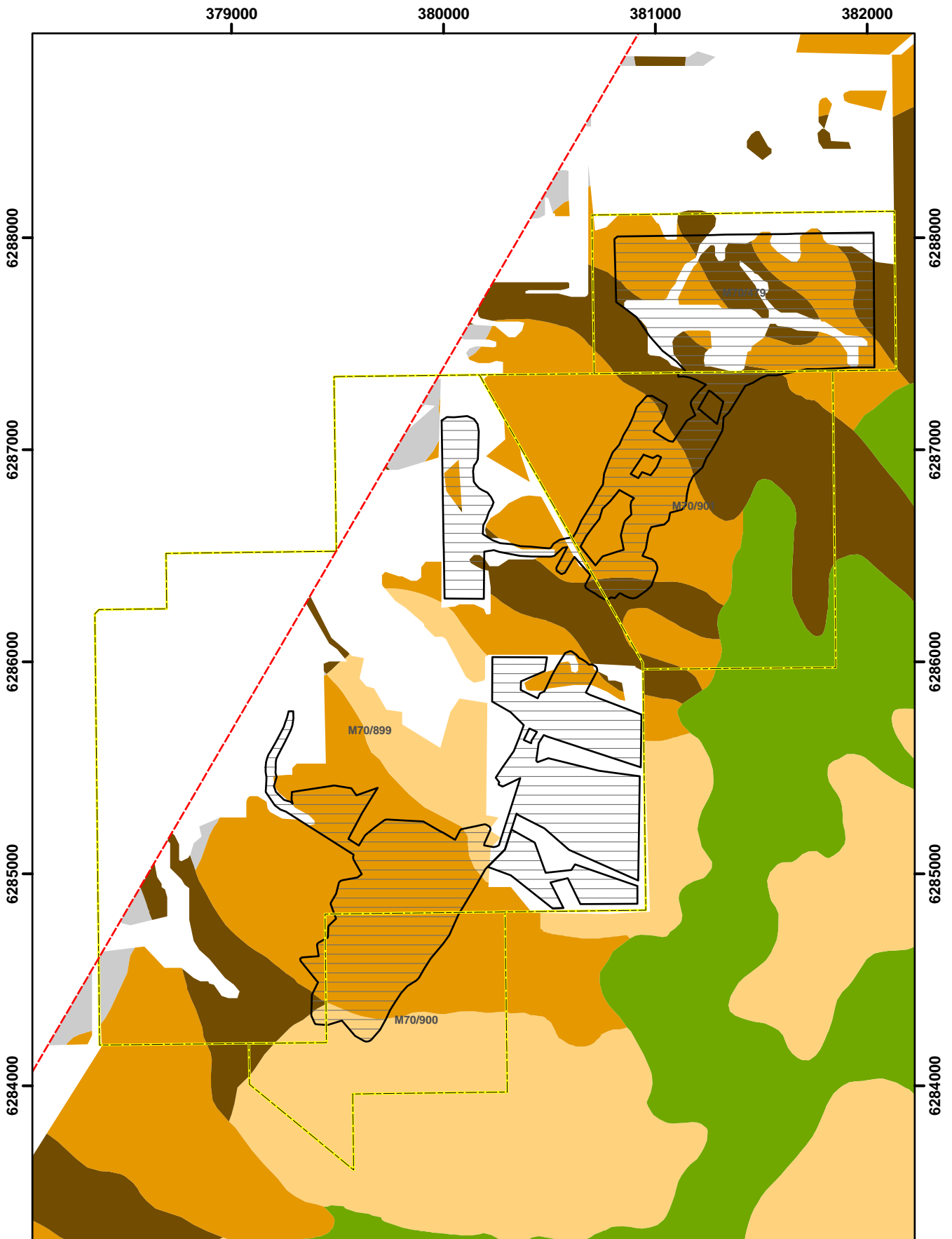
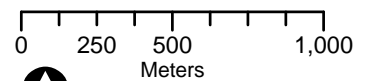


Figure 5-5:
Vegetation Complexes of the proposal area.

Legend

- | | | |
|---------------------|--------------------|---------------------|
| CSs , Cartis | RO , Rosa | Tenement Boundaries |
| KI , Kingia | WC , Whicher Scarp | Disturbance Outline |
| WCv , Whicher Scarp | | Extent of mapping |



Datum: GDA 1994 MGA Zone 50
 Drawn: DH
 Date: 5/3/09



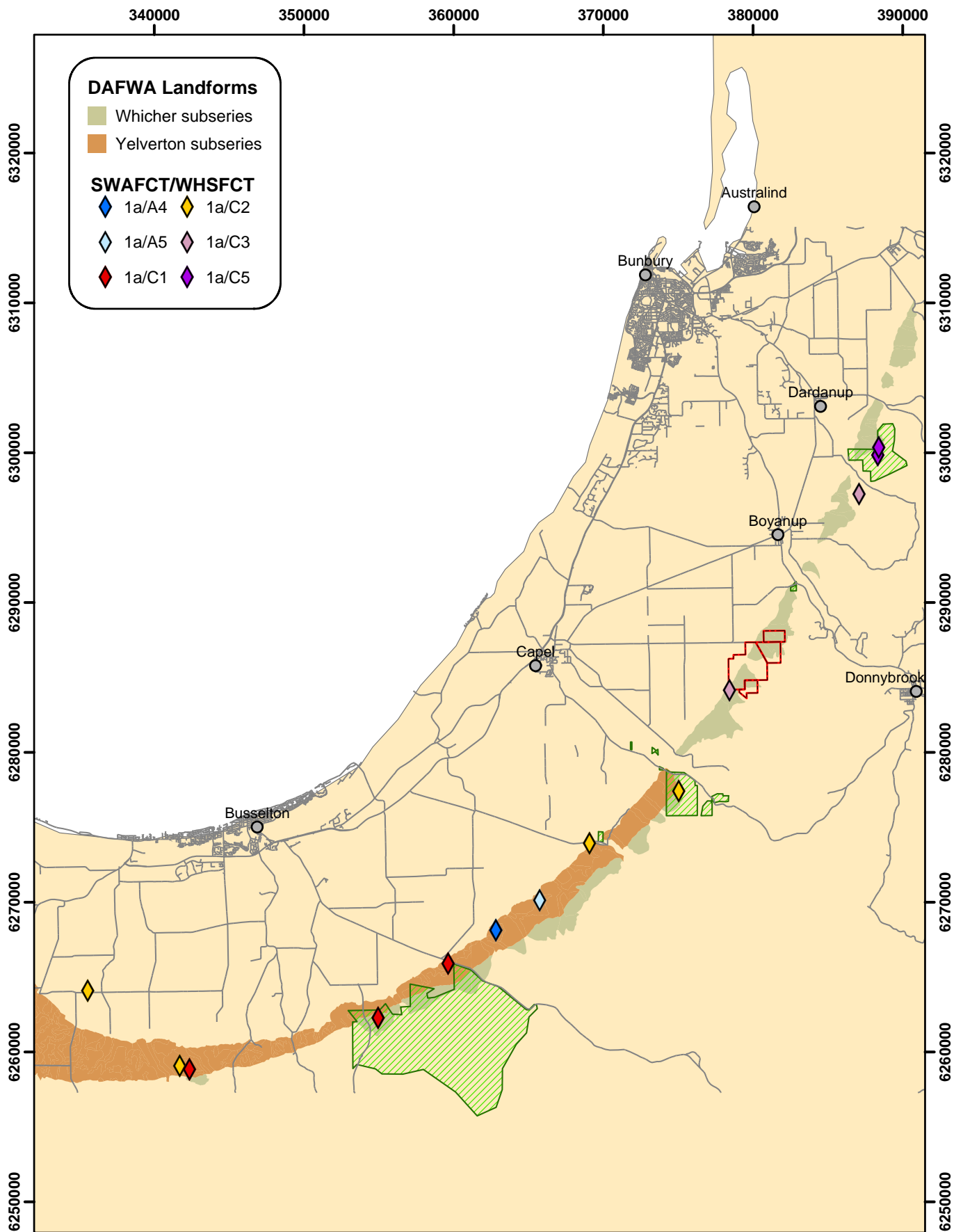
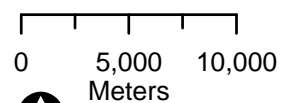


Figure 5-6
 Distribution along the Whicher Scarp of quadrats belonging to listed Priority Ecological Community 1A (from Gibson et al and Keighery et al 2008)

Legend

- Towns
- Roads
- Tenement Boundaries
- ▨ Current & Proposed Conservation Areas



Datum: GDA 94 Zone 50
 Drawn: DH
 Date: 5/6/09



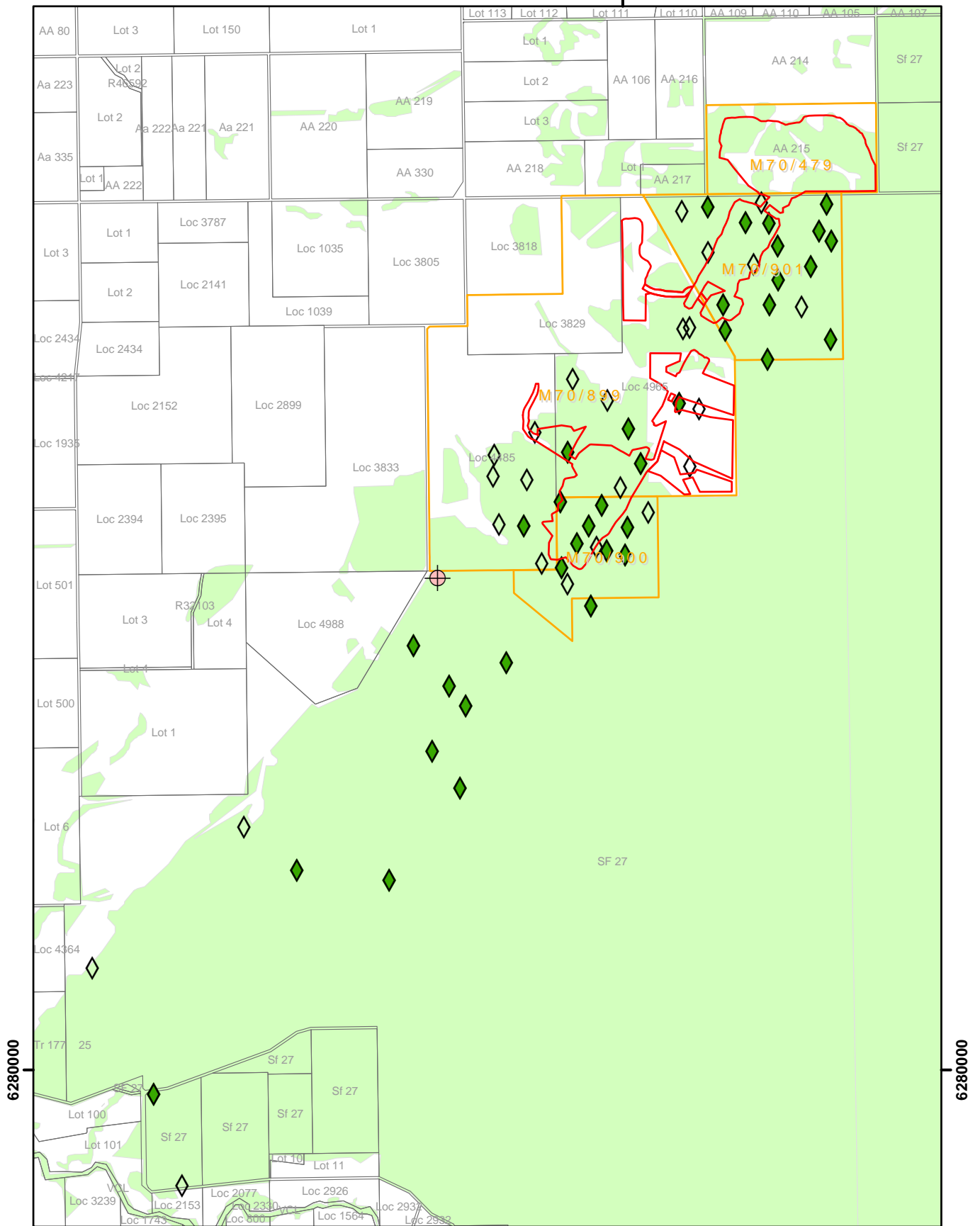
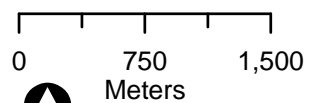


Figure 5-7
 Distribution within the Happy Valley tenements of quadrats comparable to listed Priority Ecological Community 1A (Griffin, 2008)

- Disturbance
- Tenement Boundaries
- Cadastral Boundaries
- Remanant Native Vegetation
- + SWAFCT 1a (Gibson et al)
- ◇ Bemax Quadrats
- ◆ Bemax Quadrat Equiv. to '1a'



Datum: GDA 94 Zone 50
 Drawn: DH
 Date: 9/4/09



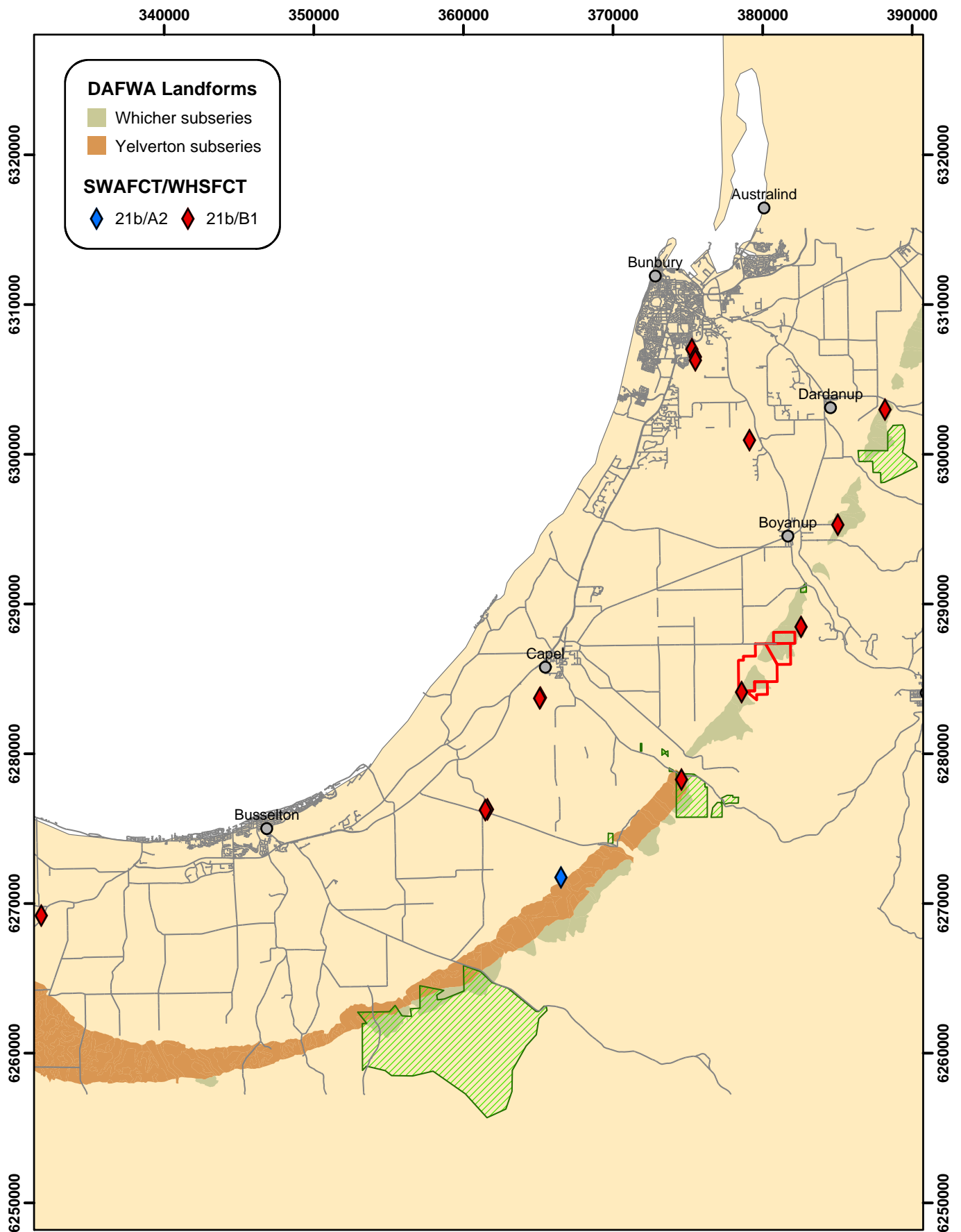
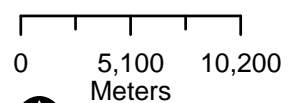


Figure 5-8
 Distribution along the Whicher Scarp of quadrats belonging to listed
 Priority Ecological Community 21b (from Gibson et al and Keighery
 et al 2008)

Legend

- Towns
- Roads
- ▨ Current & Porposed Conservation Areas
- Tenement Boundaries



Datum: GDA 94 Zone 50
 Drawn: DH
 Date: 17/7/09



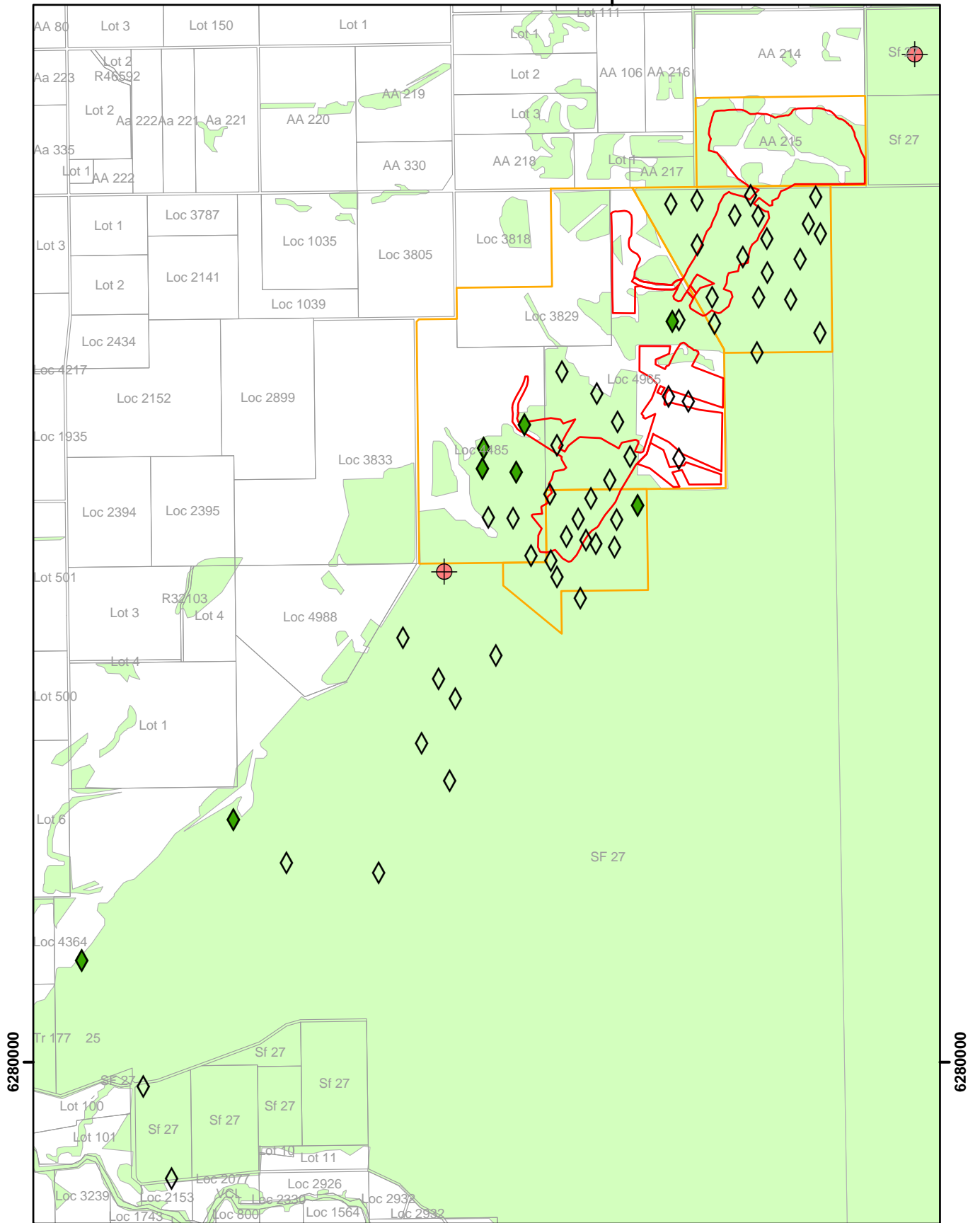
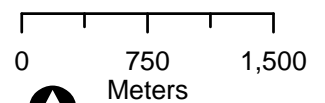


Figure 5-9
 Distribution within the Happy Valley tenements of quadrats comparable to listed Priority Ecological community 21b (Griffin, 2008)

- Disturbance
- Tenement Boundaries
- Cadastral Boundaries
- Remnant Native Vegetation
- Bemax Quadrats
- Bemax quadrat equiv. to '21b'
- SWAFCT 21b (Gibson et al)



Datum: GDA 94 Zone 50
 Drawn: DH
 Date: 9/4/09



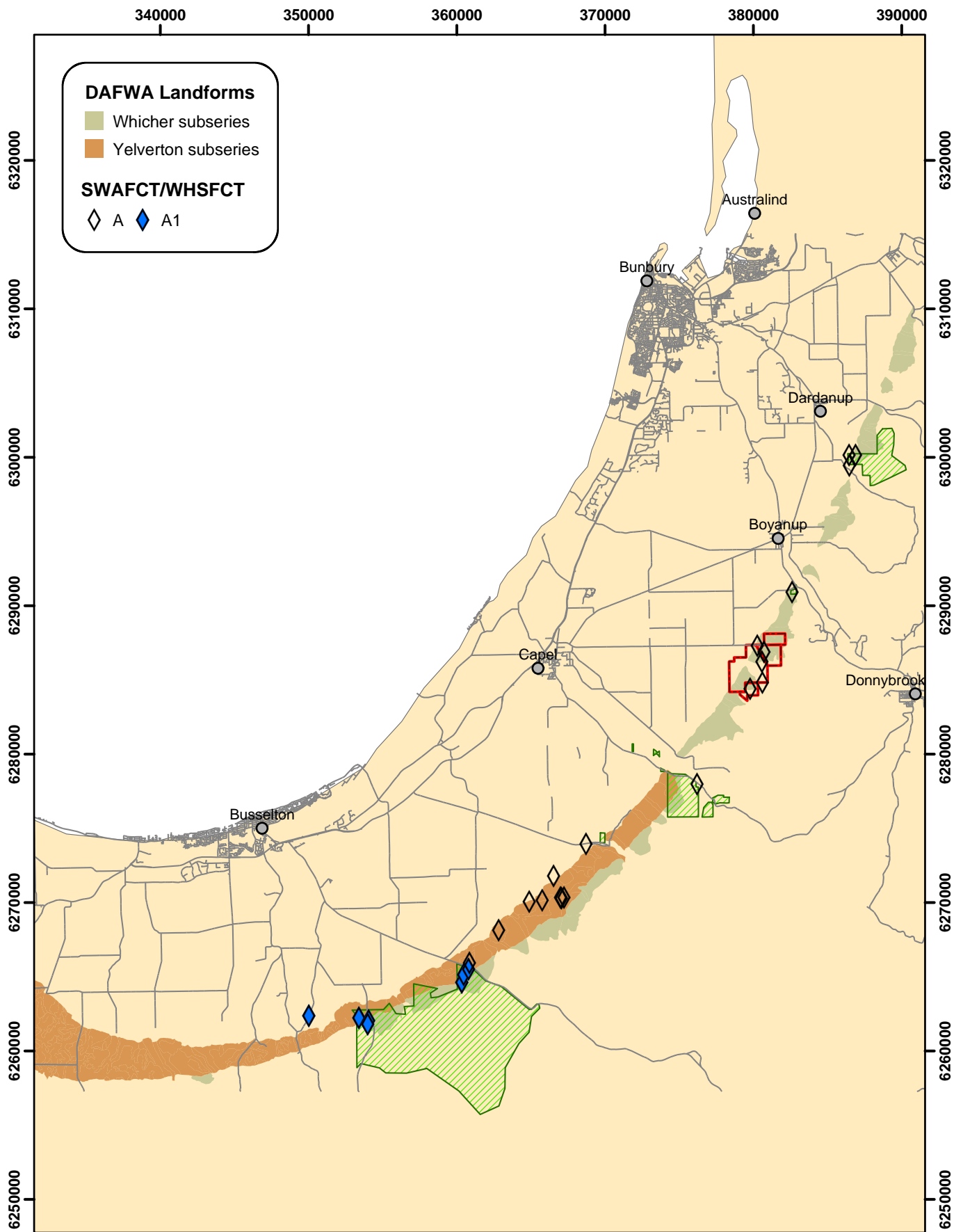
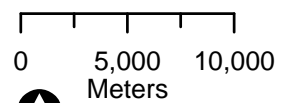


Figure 5-10
 Distribution along the Whicher Scarp of quadrats belonging to listed
 Priority Ecological Community A1 (from Gibson et al and Keighery
 et al 2008)

Legend

- Towns
- Roads
- ▨ Current & Porposed Conservation Areas
- ▭ Tenement Boundaries



Datum: GDA 94 Zone 50
 Drawn: DH
 Date: 16/7/09

