

Appendix V2
Summary of vegetation
monitoring plots, Happy
Valley 2005-2007

APPENDIX V2 SUMMARY OF HAPPY VALLEY VEGETATION MONITORING PLOTS

1. ABOUT THIS DOCUMENT

This document is an appendix to the 2009 Happy Valley ERMP and has been prepared for the purpose of providing a quick reference to the vegetation monitoring plots (quadrats) surveyed by Bennett & Brearley for the Happy Valley vegetation monitoring program.

Further details of each site are available in Bennett & Brearley (2006) and Bennett (2007).

2. SITE DESCRIPTIONS

The descriptions of the vegetation structure and floristics at each site is provided in Table 1. The location of each site is shown in Figure 1.

3. REFERENCES

All citations to other material made within this document are consistent with those in the Happy Valley ERMP, in which a full bibliography is provided.

Table 1 Site descriptions (structural information) for each plot

Site	Landform	Soil	Vegetation description
1	mid slope	grey sand	Open Low Woodland A of <i>Eucalyptus marginata</i> subsp. <i>marginata</i> and <i>Corymbia haematoxylon</i> over Open Low Woodland B of <i>Xylomelum occidentale</i> , <i>Banksia grandis</i> and <i>Persoonia longifolia</i> over Open Dwarf Scrub C of <i>Ricinocarpos cyanescens</i> over Open Dwarf Scrub D of <i>Hibbertia hypericoides</i>
2	lower slope	grey sand	Open Low Woodland B of <i>Corymbia haematoxylon</i> over Scrub of <i>Banksia grandis</i> and <i>Banksia attenuata</i> over Low Scrub A dominated by <i>Melaleuca thymoides</i> over Dwarf Scrub D dominated by <i>Hibbertia hypericoides</i> over Open Tall Sedges of <i>Phlebocarya ciliata</i>
3	lower slope	grey sand	Open Low Woodland A of <i>Eucalyptus marginata</i> subsp. <i>marginata</i> over Low Woodland B of <i>Banksia attenuata</i> over Low Scrub B of <i>Melaleuca thymoides</i> over Open Dwarf Scrub D of <i>Stirlingia latifolia</i> and <i>Hibbertia hypericoides</i>
4	mid slope	pale grey sand	Open Low Woodland B of <i>Corymbia haematoxylon</i> over Dwarf Scrub B of <i>Melaleuca trichophylla</i> over Tall Sedges of <i>Phlebocarya ciliata</i>
5	upper slope	dark grey sandy loam	Low Woodland A of <i>Eucalyptus marginata</i> subsp. <i>marginata</i> over Open Low Woodland B of <i>Corymbia haematoxylon</i> , <i>Banksia grandis</i> and <i>Xylomelum occidentale</i> over Dwarf Scrub C dominated by <i>Leucopogon propinquus</i> over Dwarf Scrub D of <i>Hibbertia hypericoides</i>
6	upper slope	grey sand	Low Woodland A of <i>Eucalyptus marginata</i> subsp. <i>marginata</i> over Open Low Woodland B of <i>Corymbia calophylla</i> over Dwarf Scrub D dominated by <i>Hibbertia hypericoides</i>
7	mid slope	grey sand	Open Low Woodland B of <i>Banksia grandis</i> and <i>Xylomelum occidentale</i> over Open Low Scrub A of <i>Xanthorrhoea preissii</i> and <i>Melaleuca thymoides</i> over Open Dwarf Scrub D of <i>Xanthorrhoea gracilis</i> over Open Tall Sedges of <i>Phlebocarya ciliata</i>
8	upper slope	yellow sand	Low Woodland A of <i>Eucalyptus marginata</i> subsp. <i>marginata</i> over Open Low Woodland B of <i>Corymbia haematoxylon</i> and <i>Banksia grandis</i> over Low Scrub A of <i>Dasyopogon hookeri</i> and <i>Daviesia nudiflora</i> subsp. <i>nudiflora</i> over Dwarf Scrub D of <i>Hibbertia hypericoides</i> and <i>Stirlingia latifolia</i> over Very Open Low Sedges dominated by <i>Mesomelaena tetragona</i>
9	upper slope	brown sandy loam	Low Woodland A of <i>Eucalyptus marginata</i> subsp. <i>marginata</i> over Low Woodland B of <i>Corymbia haematoxylon</i> , <i>Xylomelum occidentale</i> and <i>Banksia grandis</i> over Open Low Scrub B dominated by <i>Dasyopogon hookeri</i> over Dwarf Scrub D of <i>Hibbertia hypericoides</i>
10	lower slope	grey sand	Low Woodland A of <i>Eucalyptus marginata</i> subsp. <i>marginata</i> and <i>Corymbia calophylla</i> over Open Low Woodland B of <i>Corymbia haematoxylon</i> over Open Scrub of <i>Kingia australis</i> and <i>Xylomelum occidentale</i> over Low Scrub B to Open Low Scrub B of <i>Melaleuca thymoides</i> , <i>Pericalymma ellipticum</i> , <i>Xanthorrhoea gracilis</i> and <i>Kunzea recurva</i> over Dwarf Scrub D of <i>Hibbertia hypericoides</i> and <i>Stirlingia latifolia</i> over Very Open Tall Sedges of <i>Mesomelaena tetragona</i>
11	lower slope	grey sand	Open Low Woodland A of <i>Eucalyptus marginata</i> subsp. <i>marginata</i> and <i>Corymbia calophylla</i> over Open Low Woodland B of <i>Corymbia haematoxylon</i> and <i>Banksia attenuata</i> over Open Low Scrub B of <i>Melaleuca thymoides</i> , <i>Kunzea recurva</i> and <i>Daviesia incrassata</i> over Dwarf Scrub D of <i>Hibbertia hypericoides</i> and <i>Eremaea pauciflora</i> over Very Open Low Sedges of <i>Phlebocarya ciliata</i>
12	mid slope	yellow sand	Low Forest A of <i>Eucalyptus marginata</i> subsp. <i>marginata</i> and <i>Allocasuarina fraseriana</i> over Open Low Woodland B of <i>Corymbia haematoxylon</i> over Open Scrub of <i>Banksia grandis</i> , <i>Persoonia longifolia</i> and <i>Xylomelum occidentale</i> over Low Scrub B of <i>Stirlingia latifolia</i> , <i>Isopogon sphaerocephalus</i> and <i>Podocarpus drouynianus</i> over Dwarf Scrub D of <i>Hibbertia hypericoides</i>

Site	Landform	Soil	Vegetation description
13	ridge	dark brown sandy loam (skeletal)	Low Woodland A of <i>Eucalyptus marginata</i> subsp. <i>marginata</i> over Open Low Woodland B of <i>Corymbia haematoxylon</i> over Open Scrub of <i>Xanthorrhoea preissii</i> , <i>Kingia australis</i> , <i>Xylomelum occidentale</i> and <i>Persoonia longifolia</i> over Open Low Scrub B of <i>Isopogon sphaerocephalus</i> and <i>Hakea lissocarpha</i> over Dwarf Scrub D of <i>Hibbertia hypericoides</i> and <i>Dryandra lindleyana</i> var. <i>lindleyana</i>
14	lower slope	brown sandy loam	Low Woodland A of <i>Eucalyptus marginata</i> subsp. <i>marginata</i> over Low Woodland B of <i>Corymbia haematoxylon</i> over Open Scrub of <i>Banksia grandis</i> , <i>Kingia australis</i> and <i>Xanthorrhoea preissii</i> over Open Dwarf Scrub C of <i>Acacia latericola</i> and <i>Isopogon sphaerocephalus</i> over Dwarf Scrub D of <i>Hibbertia hypericoides</i> , <i>Dryandra lindleyana</i> var. <i>lindleyana</i> and <i>Thomasia grandiflora</i>
15	mid slope	grey sand	Low Forest A of <i>Eucalyptus marginata</i> subsp. <i>marginata</i> and <i>Allocasuarina fraseriana</i> over Open Low Woodland B of <i>Corymbia haematoxylon</i> over Open Low Scrub B of <i>Melaleuca thymoides</i> over Open Dwarf Scrub D of <i>Hibbertia hypericoides</i>
16	lower slope	grey sand	Open Low Woodland B of <i>Banksia attenuata</i> and <i>Banksia ilicifolia</i> over Open Low Scrub A of <i>Melaleuca thymoides</i> and <i>Kunzea recurva</i> over Open Dwarf Scrub C of <i>Eremaea pauciflora</i> over Open Dwarf Scrub D of <i>Hibbertia hypericoides</i> and <i>Stirlingia latifolia</i>
17	lower slope	yellow sand	Low Woodland A of <i>Eucalyptus marginata</i> subsp. <i>marginata</i> over Open Low Woodland B of <i>Corymbia haematoxylon</i> , <i>Banksia grandis</i> and <i>Banksia attenuata</i> over Open Dwarf Scrub C of <i>Daviesia nudiflora</i> subsp. <i>nudiflora</i> , <i>Ricinocarpos cyanescens</i> and <i>Stirlingia latifolia</i> over Dwarf Scrub D of <i>Hibbertia hypericoides</i> , <i>Synaphea whicherensis</i> and <i>Dryandra lindleyana</i> subsp. <i>lindleyana</i>
18	mid slope	yellow orange sand	Low Woodland A of <i>Eucalyptus marginata</i> subsp. <i>marginata</i> over Open Low Woodland B of <i>Corymbia haematoxylon</i> , <i>Xylomelum occidentale</i> and <i>Banksia grandis</i> over Dwarf Scrub C of <i>Xanthorrhoea preissii</i> , <i>Daviesia nudiflora</i> subsp. <i>nudiflora</i> and <i>Stirlingia latifolia</i> over Open Dwarf Scrub D of <i>Hibbertia hypericoides</i> and <i>Phlebocarya ciliata</i>
19	lower slope	grey sand	Forest of <i>Eucalyptus marginata</i> subsp. <i>marginata</i> and <i>Allocasuarina fraseriana</i> over Open Low Woodland B of <i>Corymbia haematoxylon</i> over Open Scrub of <i>Xanthorrhoea preissii</i> , <i>Xylomelum occidentale</i> and <i>Banksia grandis</i> over Dwarf Scrub C of <i>Melaleuca thymoides</i> and <i>Leucopogon pulchellus</i> 'southern form' over Open Dwarf Scrub D of <i>Hibbertia hypericoides</i> and <i>Patersonia umbrosa</i>
20	creek	grey sand	Low Forest A of <i>Eucalyptus marginata</i> subsp. <i>marginata</i> and <i>Allocasuarina fraseriana</i> over Open Low Woodland B of <i>Corymbia haematoxylon</i> over Open Scrub of <i>Xylomelum occidentale</i> over Low Heath C of <i>Pericalymma ellipticum</i> over Open Dwarf Scrub D of <i>Hibbertia hypericoides</i> and <i>Dryandra lindleyana</i> subsp. <i>lindleyana</i>
21	mid slope	heavy grey clay loam	Low Woodland A of <i>Eucalyptus marginata</i> subsp. <i>marginata</i> over Open Low Woodland B of <i>Corymbia haematoxylon</i> , <i>Banksia grandis</i> and <i>Persoonia longifolia</i> over Low Scrub A of <i>Lambertia multiflora</i> subsp. <i>occidentalis</i> and <i>Xanthorrhoea preissii</i> over Dwarf Scrub D of <i>Hibbertia glomerata</i> subsp. <i>glomerata</i> and <i>Platytheca</i> sp Argyle (G.J. & B.J. Keighery 281)
22	lower slope	grey sand	Open Low Woodland B of <i>Corymbia haematoxylon</i> , <i>Banksia grandis</i> and <i>Xylomelum occidentale</i> over Low Heath C of <i>Eremaea pauciflora</i> and <i>Melaleuca thymoides</i> over Dwarf Scrub D of <i>Phlebocarya ciliata</i> and <i>Platytheca</i> "broad leaf"
23	upper slope	grey sand	Open Low Woodland A of <i>Eucalyptus marginata</i> subsp. <i>marginata</i> and <i>Allocasuarina fraseriana</i> over Open Low Scrub A of <i>Banksia attenuata</i> , <i>Dasypogon hookeri</i> and <i>Kunzea recurva</i> over Dwarf Scrub C of <i>Melaleuca thymoides</i> , <i>Stirlingia latifolia</i> and <i>Xylomelum occidentale</i> over Dwarf Scrub D of <i>Hibbertia hypericoides</i> and <i>Phlebocarya ciliata</i> over Open Ferns of <i>Lindsaea linearis</i>
24	mid slope	yellow sand	Woodland of <i>Eucalyptus marginata</i> subsp. <i>marginata</i> over Open Low Woodland B of <i>Corymbia haematoxylon</i> , <i>Xylomelum occidentale</i> , <i>Banksia grandis</i> and <i>Persoonia longifolia</i> over Dwarf Scrub C of <i>Stirlingia latifolia</i> , <i>Isopogon sphaerocephalus</i> and <i>Gompholobium scabrum</i> over Dwarf Scrub D of <i>Hibbertia hypericoides</i>

Site	Landform	Soil	Vegetation description
25	lower slope	grey loamy sand	Open Woodland of <i>Eucalyptus marginata</i> subsp. <i>marginata</i> over Open Scrub of <i>Corymbia haematoxylon</i> and <i>Kingia australis</i> over Open Low Scrub A of <i>Dasypogon hookeri</i> and <i>Xanthorrhoea preissii</i> over Dense Tall Sedges of <i>Anarthria laevis</i>
26	ridge	grey sandy clay	Woodland of <i>Eucalyptus marginata</i> subsp. <i>marginata</i> and <i>Corymbia calophylla</i> over Open Scrub of <i>Corymbia haematoxylon</i> , <i>Xylomelum occidentale</i> , <i>Banksia grandis</i> and <i>Persoonia longifolia</i> over Open Low Scrub B of <i>Dasypogon hookeriana</i> , <i>Melaleuca thymoides</i> , <i>Hakea amplexicaulis</i> and <i>Acacia pulchella</i> var. <i>pulchella</i> over Dwarf Scrub D of <i>Hibbertia hypericoides</i> and <i>Dryandra lindleyana</i> subsp. <i>lindleyana</i>
27	minor creek	brown loam	Woodland of <i>Eucalyptus marginata</i> subsp. <i>marginata</i> over Open Low Woodland A of <i>Corymbia calophylla</i> and <i>Allocasuarina fraseriana</i> over Scrub of <i>Dryandra sessilis</i> subsp. <i>sessilis</i> over Dwarf Scrub C of <i>Pericalymma ellipticum</i> over Open Dwarf Scrub D of <i>Hibbertia hypericoides</i> and <i>Bossiaea ornata</i>
28	lower slope	yellow grey sand	Low Woodland A of <i>Eucalyptus marginata</i> subsp. <i>marginata</i> and <i>Corymbia calophylla</i> over Open Scrub of <i>Xanthorrhoea preissii</i> and Dwarf Scrub D of <i>Calothamnus sanguineus</i> and <i>Hibbertia hypericoides</i>
29	upper slope	grey yellow sandy loam	Woodland of <i>Eucalyptus marginata</i> subsp. <i>marginata</i> over Low Woodland B of <i>Corymbia calophylla</i> over Open Low Scrub A of <i>Xanthorrhoea preissii</i> over Open Low Scrub B of mixed taxa over Dwarf Scrub D of <i>Hibbertia hypericoides</i> , <i>Dryandra lindleyana</i> and <i>Calothamnus sanguineus</i>
30	mid slope	yellow sand	Forest of <i>Eucalyptus marginata</i> subsp. <i>marginata</i> and <i>Corymbia calophylla</i> over Open Scrub of <i>Xylomelum occidentale</i> and <i>Eucalyptus regrowth</i> over Open Low Scrub A of <i>Xanthorrhoea preissii</i> , <i>Hakea amplexicaulis</i> and <i>Dasypogon hookeri</i> over Dwarf Scrub D of <i>Hibbertia hypericoides</i> and <i>Dryandra lindleyana</i> subsp. <i>lindleyana</i>
31	mid slope	grey sand	Forest of <i>Eucalyptus marginata</i> subsp. <i>marginata</i> , <i>Allocasuarina fraseriana</i> and <i>Corymbia calophylla</i> over Open Scrub of <i>Xylomelum occidentale</i> , <i>Persoonia longifolia</i> and <i>Eucalyptus regrowth</i> over Dwarf Scrub C of <i>Gompholobium scabrum</i> , <i>Leucopogon propinquus</i> and <i>Stirlingia latifolia</i> over Dwarf Scrub D of <i>Hibbertia hypericoides</i> and <i>Dryandra lindleyana</i> subsp. <i>lindleyana</i>
32	upper slope	brown sandy loam	Low Woodland B of <i>Eucalyptus marginata</i> subsp. <i>marginata</i> and <i>Corymbia calophylla</i> over Scrub of <i>Banksia grandis</i> , <i>Persoonia longifolia</i> , <i>Xanthorrhoea acanthostachya</i> and <i>Xanthorrhoea preissii</i> over Open Low Scrub of mixed species over Dwarf Scrub D of mixed species over Open Herbs of <i>Patersonia umbrosa</i> subsp. <i>umbrosa</i>
33	ridge	grey sandy loam	Low Woodland A of <i>Eucalyptus marginata</i> subsp. <i>marginata</i> over Scrub of <i>Corymbia haematoxylon</i> and <i>Xylomelum occidentale</i> over Open Low Scrub A of <i>Xanthorrhoea acanthostachya</i> over Open Low Scrub B of mixed species over Dwarf Scrub D dominated by <i>Hibbertia hypericoides</i>
34	lower slope	grey sand	Open Low Woodland A of <i>Eucalyptus marginata</i> subsp. <i>marginata</i> over Open Low Woodland B of <i>Banksia attenuata</i> , <i>Allocasuarina fraseriana</i> , <i>Corymbia haematoxylon</i> , <i>Persoonia longifolia</i> and <i>Banksia grandis</i> over Low Scrub B of <i>Pericalymma ellipticum</i> , <i>Melaleuca thymoides</i> , <i>Dasypogon hookeri</i> over Dwarf Scrub D of <i>Stirlingia latifolia</i> and <i>Hibbertia hypericoides</i> over Open Low Sedges dominated by <i>Dasypogon bromeliifolius</i>
35	lower slope	brown sandy loam	Open Woodland of <i>Eucalyptus marginata</i> subsp. <i>marginata</i> and <i>Corymbia calophylla</i> over Open Low Woodland B of <i>Allocasuarina fraseriana</i> and <i>Corymbia haematoxylon</i> over Open Scrub of <i>Dasypogon hookeriana</i> and <i>Banksia grandis</i> over Low Scrub B of <i>Hakea amplexicaulis</i> and <i>Xanthorrhoea gracilis</i> over Dwarf Scrub C dominated by <i>Hibbertia hypericoides</i> over Open Herbs of <i>Patersonia umbrosa</i>
36	lower slope	yellow sand	Open Low Woodland A of <i>Corymbia calophylla</i> and <i>Eucalyptus marginata</i> subsp. <i>marginata</i> over Scrub of <i>Dasypogon bromeliifolius</i> over Heath A of <i>Pericalymma ellipticum</i> over Open Dwarf Scrub D of <i>Hibbertia hypericoides</i>

Site	Landform	Soil	Vegetation description
37	mid slope	sandy loam	Forest of <i>Corymbia calophylla</i> and <i>Eucalyptus marginata</i> subsp. <i>marginata</i> over Low Woodland A of <i>Corymbia haematoxylon</i> , <i>Banksia grandis</i> and <i>Persoonia longifolia</i> over Scrub of <i>Xanthorrhoea preissii</i> and <i>Hakea amplexicaulis</i> over Dwarf Scrub D of mixed species
38	lower slope	grey sand	Open Woodland of <i>Eucalyptus marginata</i> subsp. <i>marginata</i> over Open Low Woodland A of <i>Corymbia haematoxylon</i> over Open Low Scrub A of <i>Kunzea recurva</i> and <i>Melaleuca thymoides</i> over Open Dwarf Scrub D of <i>Stirlingia latifolia</i> over Low Sedges of <i>Phlebocarya ciliata</i>
39	mid slope	grey sand	Low Forest A of <i>Allocasuarina fraseriana</i> , <i>Corymbia haematoxylon</i> , <i>Banksia grandis</i> and <i>Eucalyptus marginata</i> subsp. <i>marginata</i> over Low Scrub A of <i>Xanthorrhoea preissii</i> and <i>Melaleuca thymoides</i> over Dwarf Scrub D of mixed species over Open Tall Sedges of <i>Phlebocarya ciliata</i>
40	lower slope	grey sand	Low Woodland B of <i>Banksia ilicifolia</i> , <i>Banksia attenuata</i> and <i>Allocasuarina fraseriana</i> over Scrub of <i>Melaleuca thymoides</i> , <i>Xanthorrhoea preissii</i> and <i>Kunzea recurva</i> over Dwarf Scrub C of <i>Stirlingia latifolia</i> and <i>Adenanthos meisneri</i> over Very Open Low Sedges of <i>Phlebocarya ciliata</i>
41	creek (adjacent to)	yellow sand	Open Low Woodland A of <i>Eucalyptus marginata</i> subsp. <i>marginata</i> , <i>Banksia grandis</i> and <i>Xylomelum occidentale</i> over Open Low Scrub A of <i>Xanthorrhoea preissii</i> and <i>Hakea ruscifolia</i> over Open Dwarf Scrub C dominated by <i>Melaleuca thymoides</i> and <i>Stirlingia latifolia</i> over Dwarf Scrub D dominated by <i>Hibbertia hypericoides</i>
Extra-1		grey yellow sand	Low Woodland A of <i>Corymbia haematoxylon</i> , <i>Corymbia calophylla</i> , <i>Xylomelum occidentale</i> and <i>Eucalyptus marginata</i> subsp. <i>marginata</i> over Open Scrub of <i>Xanthorrhoea preissii</i> over Dwarf Scrub C dominated by <i>Leucopogon racemosus</i> and <i>Leucopogon pulchellus</i> 'southern form'
Extra-2		yellow sand	Open Low Woodland A of <i>Eucalyptus marginata</i> subsp. <i>marginata</i> , <i>Xylomelum occidentale</i> and <i>Corymbia haematoxylon</i> over Low Heath C dominated by <i>Leucopogon pulchellus</i> 'southern form' and <i>Daviesia nudiflora</i> subsp. <i>nudiflora</i> over Dwarf Scrub C dominated by <i>Hibbertia hypericoides</i> in yellow sand
Extra-3		grey yellow sand	Low Woodland A of <i>Eucalyptus marginata</i> subsp. <i>marginata</i> and <i>Corymbia haematoxylon</i> over Low Heath C dominated by <i>Stirlingia latifolia</i> in grey/yellow sand
Extra-4		yellow sand	Low Woodland A of <i>Corymbia haematoxylon</i> , <i>Banksia attenuata</i> , <i>Banksia grandis</i> and <i>Allocasuarina fraseriana</i> over Low Heath C of mixed taxa including <i>Daviesia nudiflora</i> subsp. <i>nudiflora</i>
Extra-5		yellow sand	Open Low Woodland A of <i>Eucalyptus marginata</i> subsp. <i>marginata</i> and <i>Banksia grandis</i> over Low Scrub A dominated by <i>Xanthorrhoea preissii</i> over Low Heath C of mixed taxa including <i>Daviesia nudiflora</i> subsp. <i>nudiflora</i> , <i>Stirlingia latifolia</i> and <i>Platytheca</i> sp. <i>Argyle</i> in yellow sand
Extra-6		yellow sand	Open Low Woodland A of <i>Eucalyptus marginata</i> subsp. <i>marginata</i> , <i>Allocasuarina fraseriana</i> , <i>Corymbia haematoxylon</i> , <i>Banksia grandis</i> and <i>Xylomelum occidentale</i> over Dwarf Scrub C of several taxa including <i>Daviesia nudiflora</i> subsp. <i>nudiflora</i> , <i>Adenanthos meisneri</i> and <i>Xanthorrhoea gracilis</i> over Dwarf Scrub D dominated by <i>Synaphea whicherensis</i> in yellow sand
Extra-7		yellow sand	Open Low Woodland A of <i>Corymbia haematoxylon</i> , <i>Allocasuarina fraseriana</i> and <i>Eucalyptus marginata</i> subsp. <i>marginata</i> over Low Heath C dominated by <i>Daviesia nudiflora</i> subsp. <i>nudiflora</i> over Dwarf Scrub D of mixed taxa over Very Open Tall Sedges of mixed taxa in yellow sand
Extra-8		yellow sand	Low Woodland A of <i>Eucalyptus marginata</i> subsp. <i>marginata</i> , <i>Allocasuarina fraseriana</i> , <i>Corymbia haematoxylon</i> and <i>Banksia grandis</i> over Heath B of mixed taxa including <i>Ricinocarpos cyanescens</i> , <i>Stirlingia latifolia</i> and <i>Xanthorrhoea gracilis</i> over Dwarf Scrub D dominated by <i>Hibbertia hypericoides</i> over Very Open Low Sedges of several taxa

Site	Landform	Soil	Vegetation description
Extra-9		yellow sand	Low Woodland A of <i>Eucalyptus marginata</i> subsp. <i>marginata</i> , <i>Corymbia haematoxylon</i> and <i>Banksia grandis</i> over Open Low Scrub A of <i>Daviesia divaricata</i> and <i>Hakea ruscifolia</i> over Open Low Scrub B dominated by <i>Dasypogon hookeri</i> over Dwarf Scrub C dominated by <i>Hibbertia hypericoides</i>
Extra-10		grey sand	Low Woodland A of <i>Eucalyptus marginata</i> subsp. <i>marginata</i> , <i>Banksia attenuata</i> , <i>Xylomelum occidentale</i> and <i>Banksia grandis</i> over Low Scrub A dominated by <i>Melaleuca thymoides</i> and <i>Allocasuarina humilis</i> over Low Heath C dominated by <i>Stirlingia latifolia</i> over Dwarf Scrub D dominated by <i>Hibbertia hypericoides</i>
Extra-11		grey sand	Low Woodland A of <i>Eucalyptus marginata</i> subsp. <i>marginata</i> , <i>Banksia attenuata</i> and <i>Allocasuarina fraseriana</i> over Low Scrub B dominated by <i>Melaleuca thymoides</i> over Dwarf Scrub D dominated by <i>Stirlingia latifolia</i> and <i>Hibbertia hypericoides</i>
2007-1	creek	grey sandy loam	Open Low Woodland A of <i>Allocasuarina fraseriana</i> , <i>Corymbia calophylla</i> and <i>Eucalyptus marginata</i> subsp. <i>marginata</i> over Low Heath C dominated by <i>Hibbertia hypericoides</i> over Herbs dominated by <i>Phlebocarya ciliata</i> and <i>Levenhookia pusilla</i> over Very Open Ferns of <i>Lindsaea linearis</i>
2007-2	creek (upper reaches)	yellow sandy clay	Low Forest A of <i>Allocasuarina fraseriana</i> , <i>Corymbia calophylla</i> and <i>Eucalyptus marginata</i> subsp. <i>marginata</i> over Open Scrub of <i>Taxandria parviceps</i> over Scrub of <i>Xanthorrhoea preissii</i> over Open Low Scrub B of <i>Hakea lissocarpa</i> and <i>Taxandria linearifolia</i> over Open Dwarf Scrub D of mixed taxa dominated by <i>Hibbertia hypericoides</i> over Very Open Low Grass of <i>Neurachne alopecuroidea</i> over Very Open Tall Sedges dominated by <i>Tetraria octandra</i> over Open Herbs
2007-3	creek	grey sandy clay	Low Woodland A of <i>Corymbia haematoxylon</i> and <i>Corymbia calophylla</i> over Open Scrub of <i>Dasypogon hookeri</i> over Open Low Scrub A of <i>Xanthorrhoea preissii</i> over Open Dwarf Scrub D of mixed taxa over Tall Sedges dominated by <i>Cyathochaeta avenacea</i>
2007-4	creek	grey sandy loam	Woodland of <i>Corymbia calophylla</i> over Open Low Woodland A of <i>Agonis flexuosa</i> var. <i>flexuosa</i> over Scrub of <i>Kingia australis</i> and <i>Dasypogon hookeri</i> over Open Tall Sedges dominated by <i>Lepidosperma squamatum</i> over Very Open Low Sedges dominated by <i>Desmocladus fasciculatus</i>
2007-5	creek (swampy area)	brown silty loam	Low Forest A of <i>Banksia littoralis</i> and <i>Corymbia calophylla</i> over Scrub of <i>Xanthorrhoea preissii</i> and <i>Leucopogon australis</i> over Open Dwarf Scrub C of mixed taxa over Open Tall Sedges dominated by <i>Tetraria octandra</i> over Herbs dominated by <i>Stylidium crassifolium</i>
2007-6	creek (incised)	grey sand	Open Low Woodland A of <i>Corymbia calophylla</i> over Dwarf Scrub C dominated by <i>Pericalymma ellipticum</i> over Dwarf Scrub D dominated by <i>Hibbertia hypericoides</i> over Very Open Tall Sedges dominated by <i>Mesomelaena tetragona</i>
2007-7	creek	grey sand	Low Forest A dominated by <i>Corymbia calophylla</i> with scattered <i>Allocasuarina fraseriana</i> and <i>Corymbia haematoxylon</i> over Low Scrub A of <i>Xanthorrhoea preissii</i> and <i>Dasypogon hookeri</i> over Dwarf Scrub C dominated by <i>Pericalymma ellipticum</i> over Open Low Sedges dominated by <i>Lepidosperma squamatum</i> over Very Open Ferns of <i>Lindsaea linearis</i>
2007-8	creek (narrowly incised)	grey sand	Low Woodland A of <i>Eucalyptus marginata</i> subsp. <i>marginata</i> , <i>Corymbia calophylla</i> and <i>Allocasuarina fraseriana</i> over shrubs of mixed taxa
2007-9	creek (narrowly incised)	grey sand	Low Woodland A of <i>Eucalyptus marginata</i> subsp. <i>marginata</i> , <i>Corymbia calophylla</i> and <i>Allocasuarina fraseriana</i> over shrubs of mixed taxa

Figure 1 Locations of monitoring sites

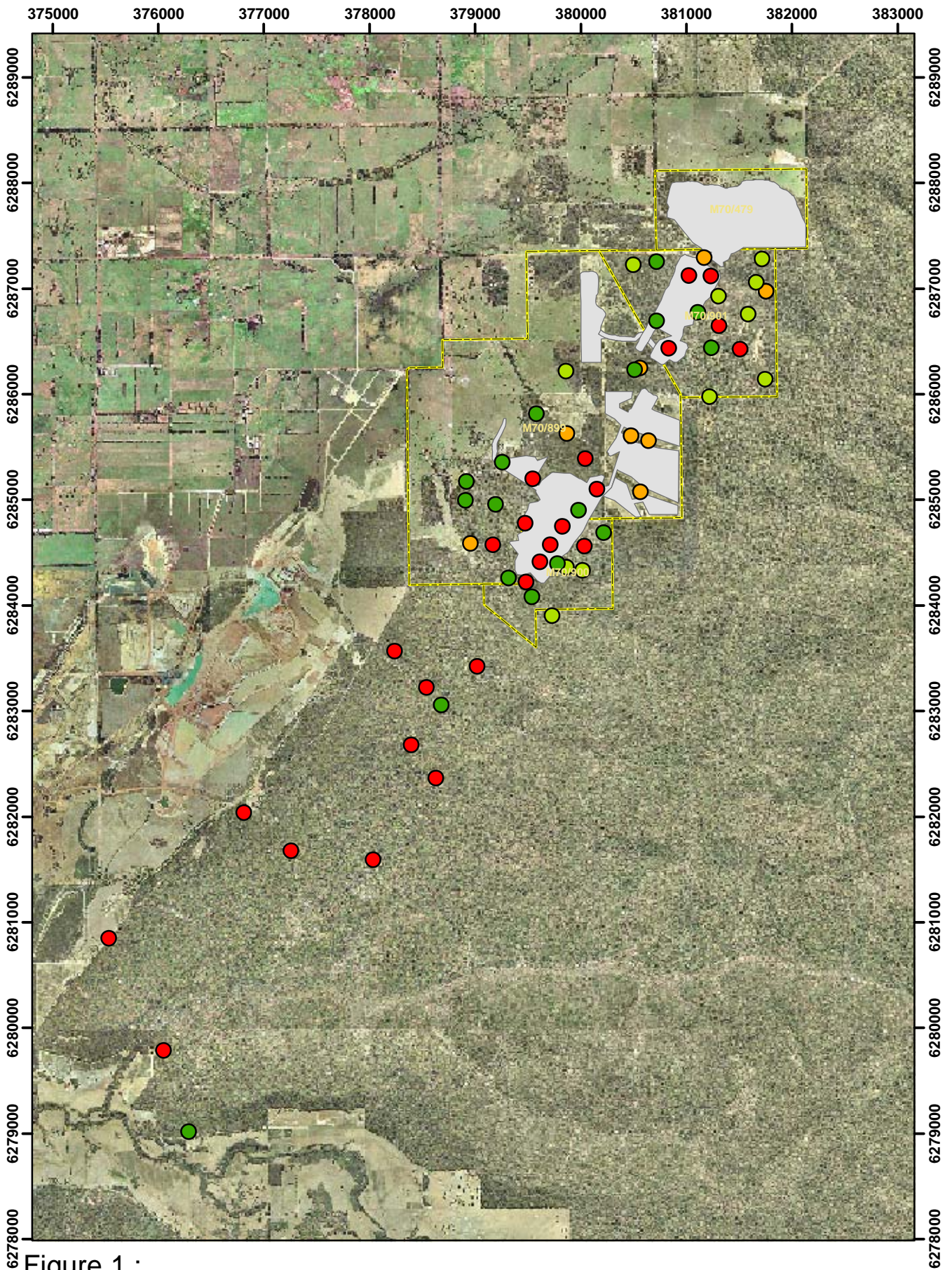
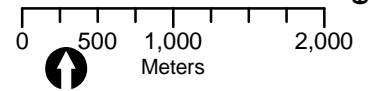


Figure 1 :
 Location and grouping of quadrats
 established by Bennett & Brearley 2005-2007

Legend

- CREEK
- GREYSAND
- LATERITE
- SANDY MS
- Tenement Boundaries
- Disturbance



Datum: GDA 1994 MGA Zone 50
 Drawn: BJ
 Date: 16/04/09

